



► TRUSTEE AREA SCENARIOS

SANTA CLARA ELEMENTARY SCHOOL
DISTRICT

JANUARY 19, 2022



COOPERATIVE
STRATEGIES

ASSESS • PLAN • FUND • BUILD

► TRUSTEE AREA PROCESS

DATE	ACTIVITY
October 20, 2021	Board Meeting: First Pre-Map Public Hearing and Presentation
November 17, 2021	Board Meeting: Second Pre-Map Public Hearing
November 18, 2021— December 8, 2021	Preparation of draft Trustee Area Scenarios
December 15, 2021	Board Meeting: First Public Hearing on Trustee Area Scenarios
January 19, 2022	Board Meeting: Second Public Hearing on Trustee Area Scenarios
February 16, 2022	Board Meeting: Third Public Hearing on Trustee Area Scenarios Board Selection of Trustee Area Map Board Consideration of Change in Election Method
February/March 2022	County Committee on School District Organization Holds a Public Hearing and Considers Approval of Change in Election Method and Trustee Area Map
March/April 2022	Cooperative Strategies sends Final Trustee Area Map to the County Registrar of Voters
November 8, 2022	First Election Held Utilizing Trustee Areas

► CONSIDERATIONS IN TRUSTEE AREAS



Each area shall contain nearly equal number of inhabitants



Follow man-made and natural geographic features, as much as possible



Drawn to comply with the Federal Voting Rights Act



Respect incumbency, if possible



Compact and contiguous, as much as possible



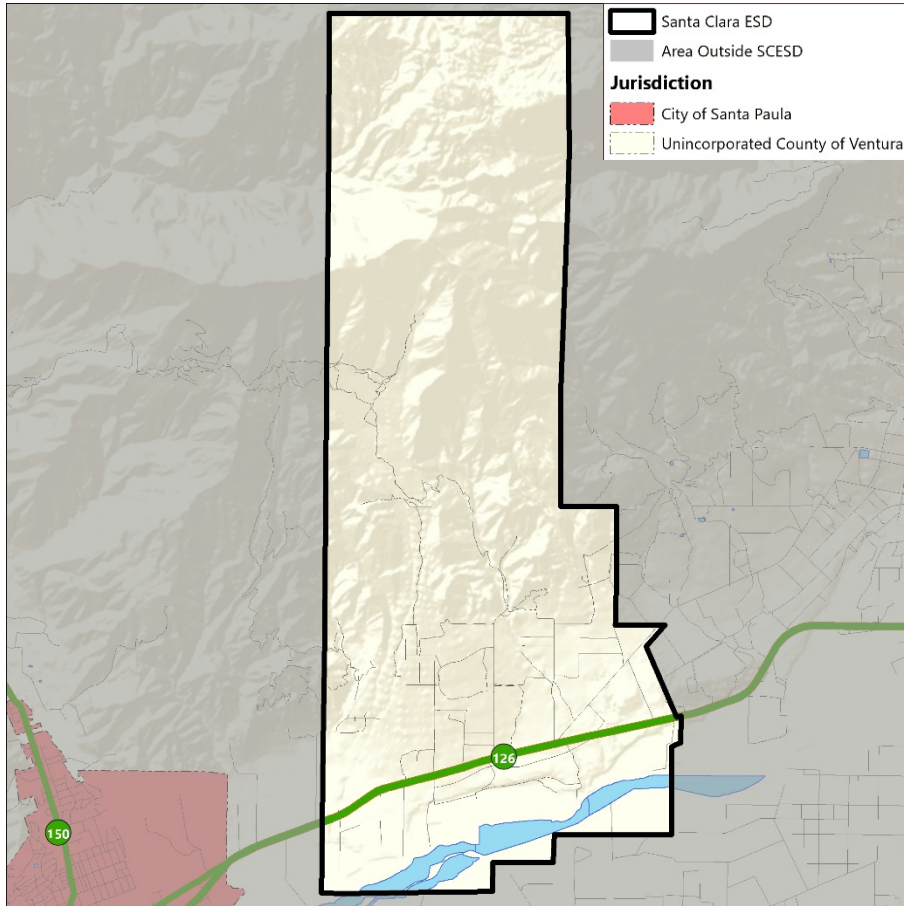
Other local considerations (i.e., school boundaries, locations of school sites)



Respect communities of interest, as much as possible

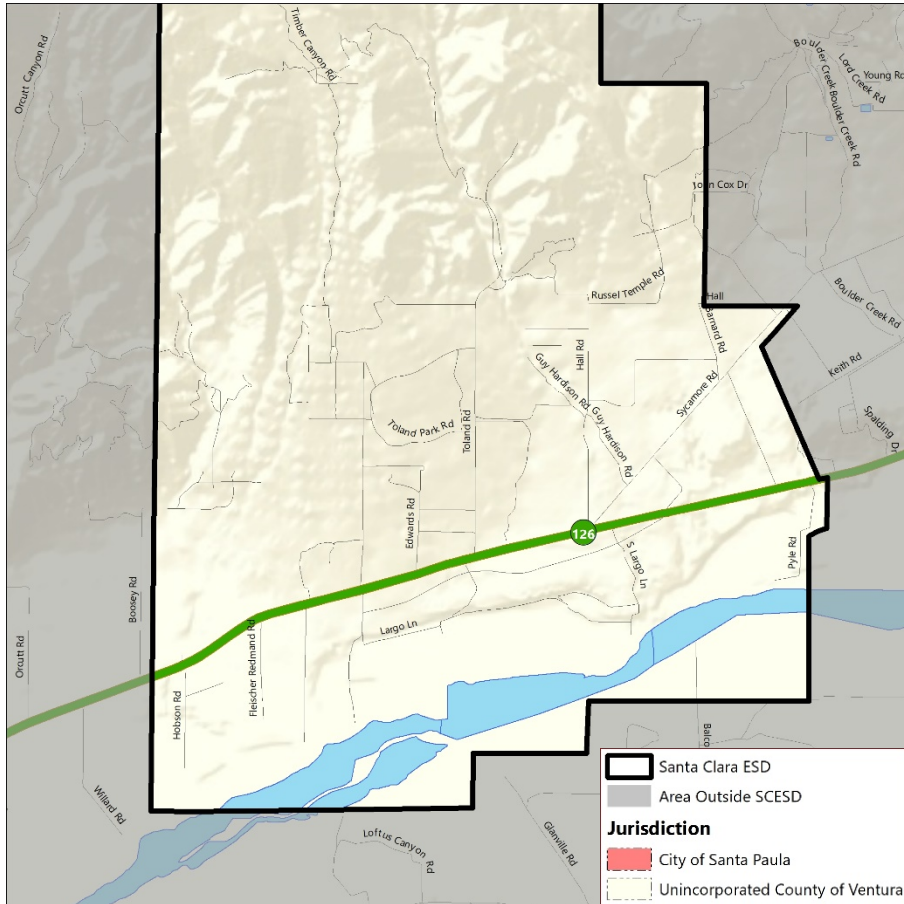
► DISTRICT DEMOGRAPHICS

2020 CENSUS DATA



Population	Total Population		Age 18 and over	
	Total	%	Total	%
Hispanic/Latino	122	56.0%	80	53.3%
White	86	39.4%	67	44.7%
Black / African American	0	0.0%	0	0.0%
American Indian / Alaska Native	0	0.0%	0	0.0%
Asian	1	0.5%	1	0.7%
Native Hawaiian/ Pacific Islander	0	0.0%	0	0.0%
Two or More Races	4	1.8%	2	1.3%
Other	5	2.3%	0	0.0%
Total	218	100%	150	100%

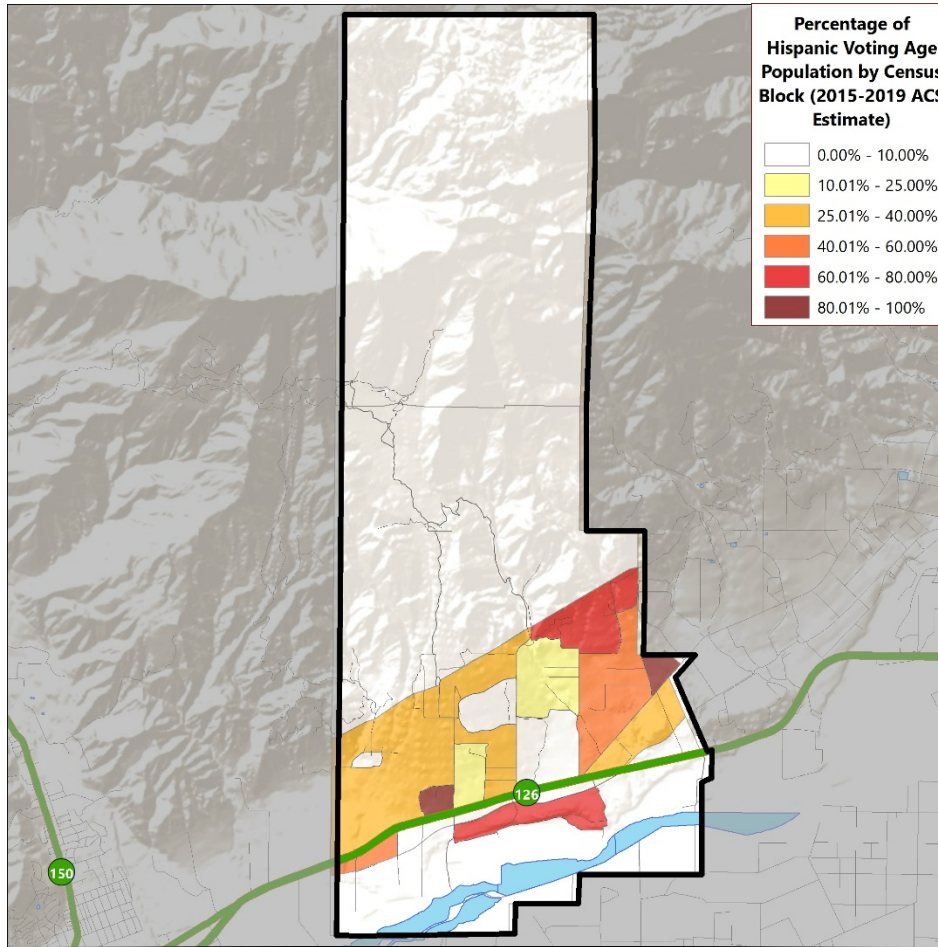
► DISTRICT DEMOGRAPHICS 2020 CENSUS DATA



Population	Total Population		Age 18 and over	
	Total	%	Total	%
Hispanic/Latino	122	56.0%	80	53.3%
White	86	39.4%	67	44.7%
Black / African American	0	0.0%	0	0.0%
American Indian / Alaska Native	0	0.0%	0	0.0%
Asian	1	0.5%	1	0.7%
Native Hawaiian/ Pacific Islander	0	0.0%	0	0.0%
Two or More Races	4	1.8%	2	1.3%
Other	5	2.3%	0	0.0%
Total	218	100%	150	100%

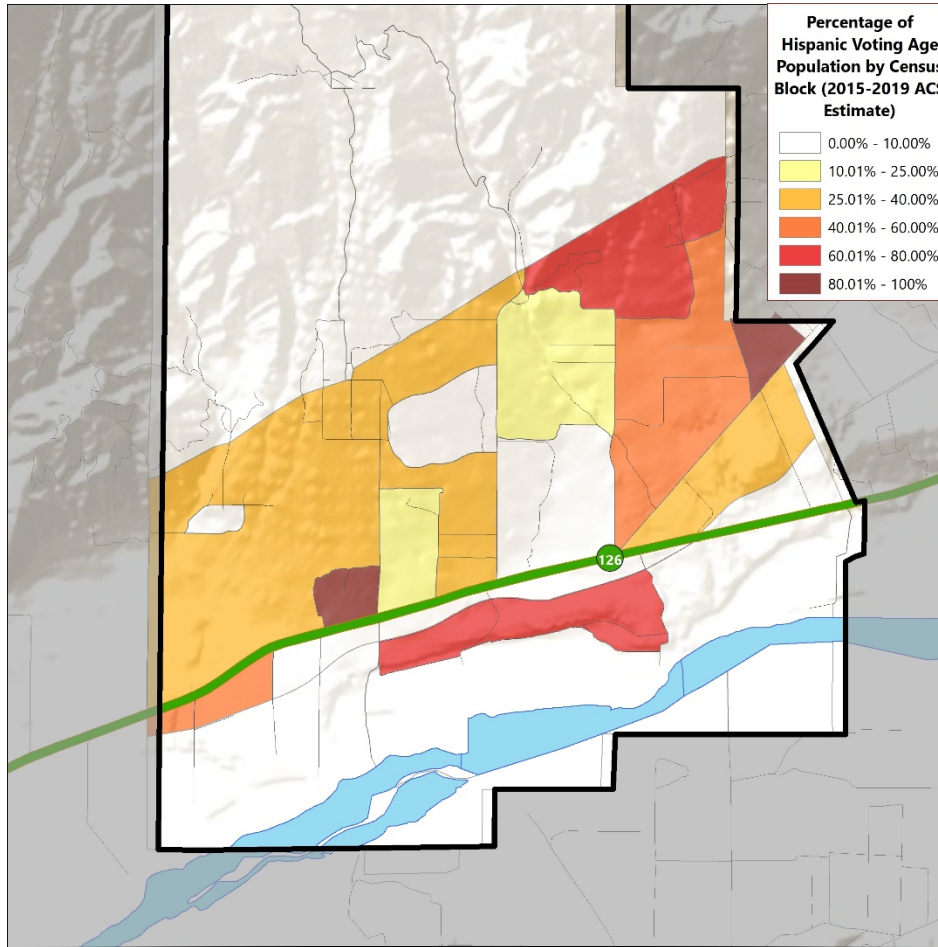
► DISTRICT DEMOGRAPHICS

CITIZEN VOTING AGE POPULATION ESTIMATES



Population	2015-2019 CVAP	
	Total	%
Hispanic/Latino	40	31.3%
White	86	67.2%
Black / African American	0	0.0%
American Indian / Alaska Native	0	0.0%
Asian	2	1.6%
Native Hawaiian/ Pacific Islander	0	0.0%
Two or More Races	0	0.0%
Total	128	100%

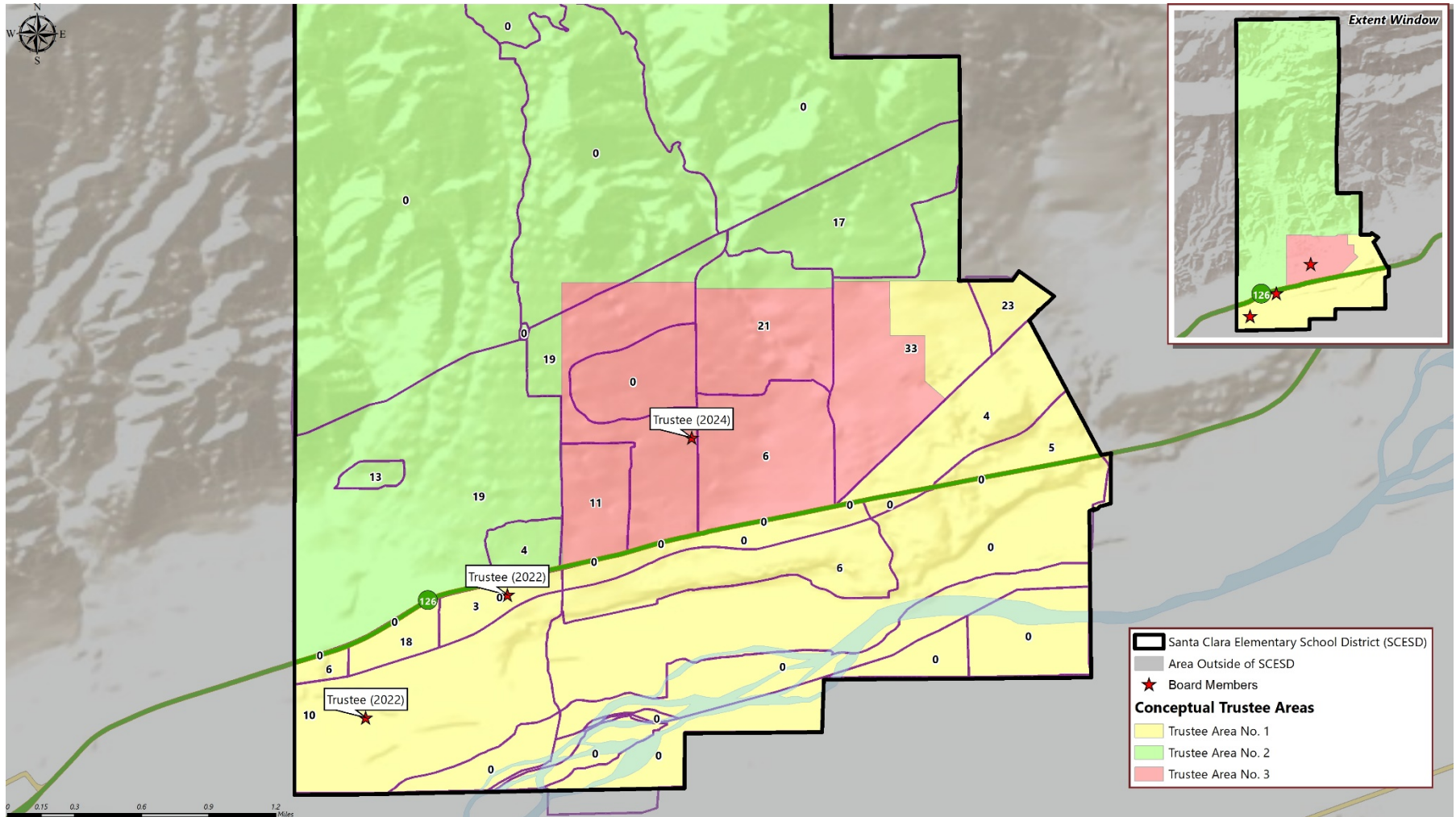
► DISTRICT DEMOGRAPHICS
CITIZEN VOTING AGE POPULATION ESTIMATES



Population	2015-2019 CVAP	
	Total	%
Hispanic/Latino	40	31.3%
White	86	67.2%
Black / African American	0	0.0%
American Indian / Alaska Native	0	0.0%
Asian	2	1.6%
Native Hawaiian/ Pacific Islander	0	0.0%
Two or More Races	0	0.0%
Total	128	100%

► CONCEPTUAL TRUSTEE AREAS

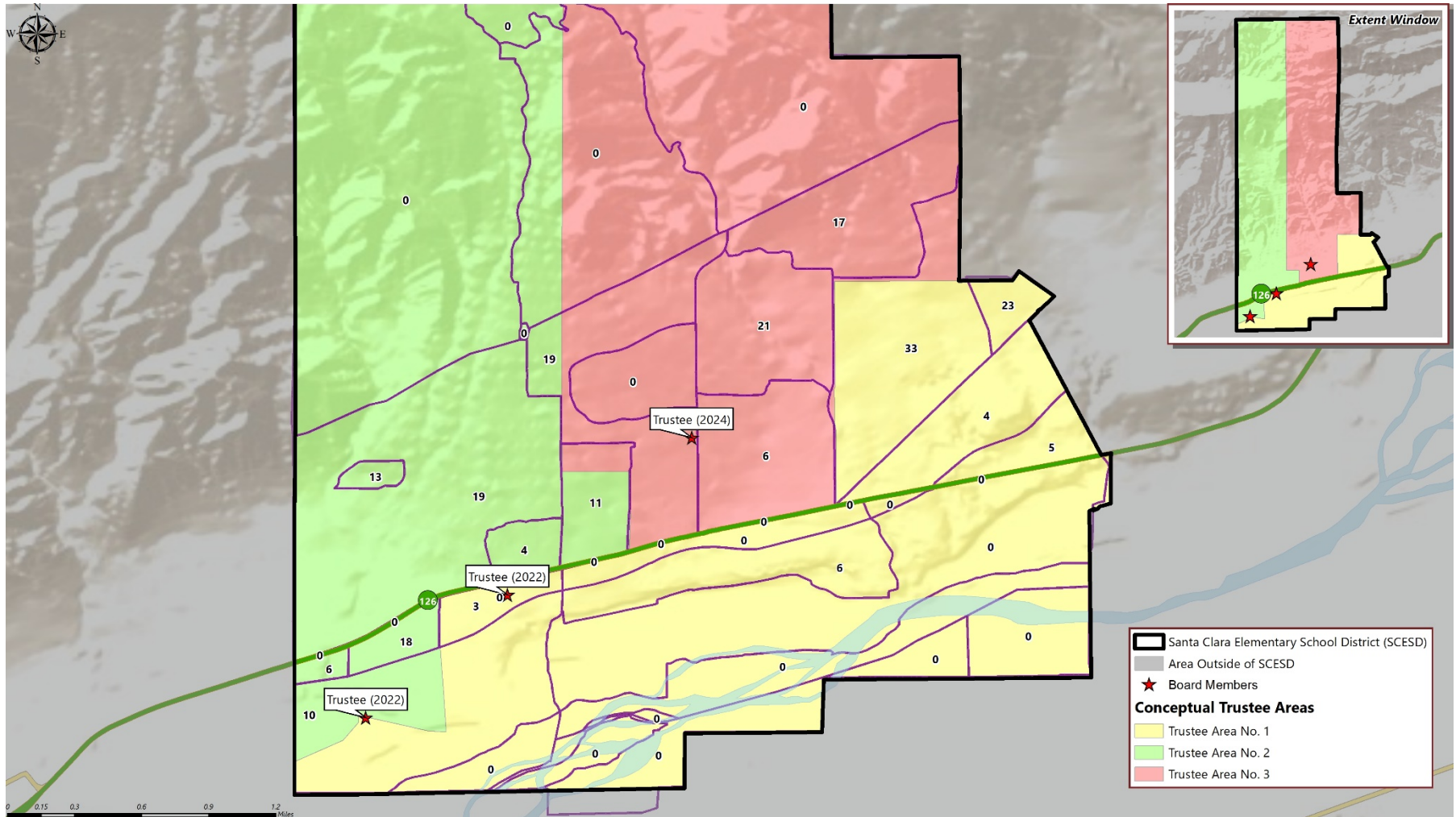
SCENARIO 1



► **DEMOGRAPHICS**
SCENARIO 1

Total Population:	218	Ideal Trustee Area Size:	73	Variance:	9.6%	
TRUSTEE AREA	Trustee Area 1		Trustee Area 2		Trustee Area 3	
TP* vs. CVAP**	TP	CVAP	TP	CVAP	TP	CVAP
Population	77	30	71	59	70	40
Population Variance	5.5%	N/A	-2.7%	N/A	-4.1%	N/A
Hispanic/Latino	55.3%	45.0%	55.0%	27.2%	57.9%	27.0%
White	39.1%	55.0%	42.1%	69.4%	36.7%	73.0%
Black/African American	0.0%	0.0%	0.0%	0.0%	0.0%	0.0%
American Indian/Alaska Native	0.0%	0.0%	0.0%	0.0%	0.0%	0.0%
Asian	0.0%	0.0%	1.4%	3.4%	0.0%	0.0%
Native Hawaiian/Other Pacific Islander	0.0%	0.0%	0.0%	0.0%	0.0%	0.0%
Other	0.4%	N/A	1.5%	N/A	5.4%	N/A
Two or More Races	5.2%	0.0%	0.0%	0.0%	0.0%	0.0%

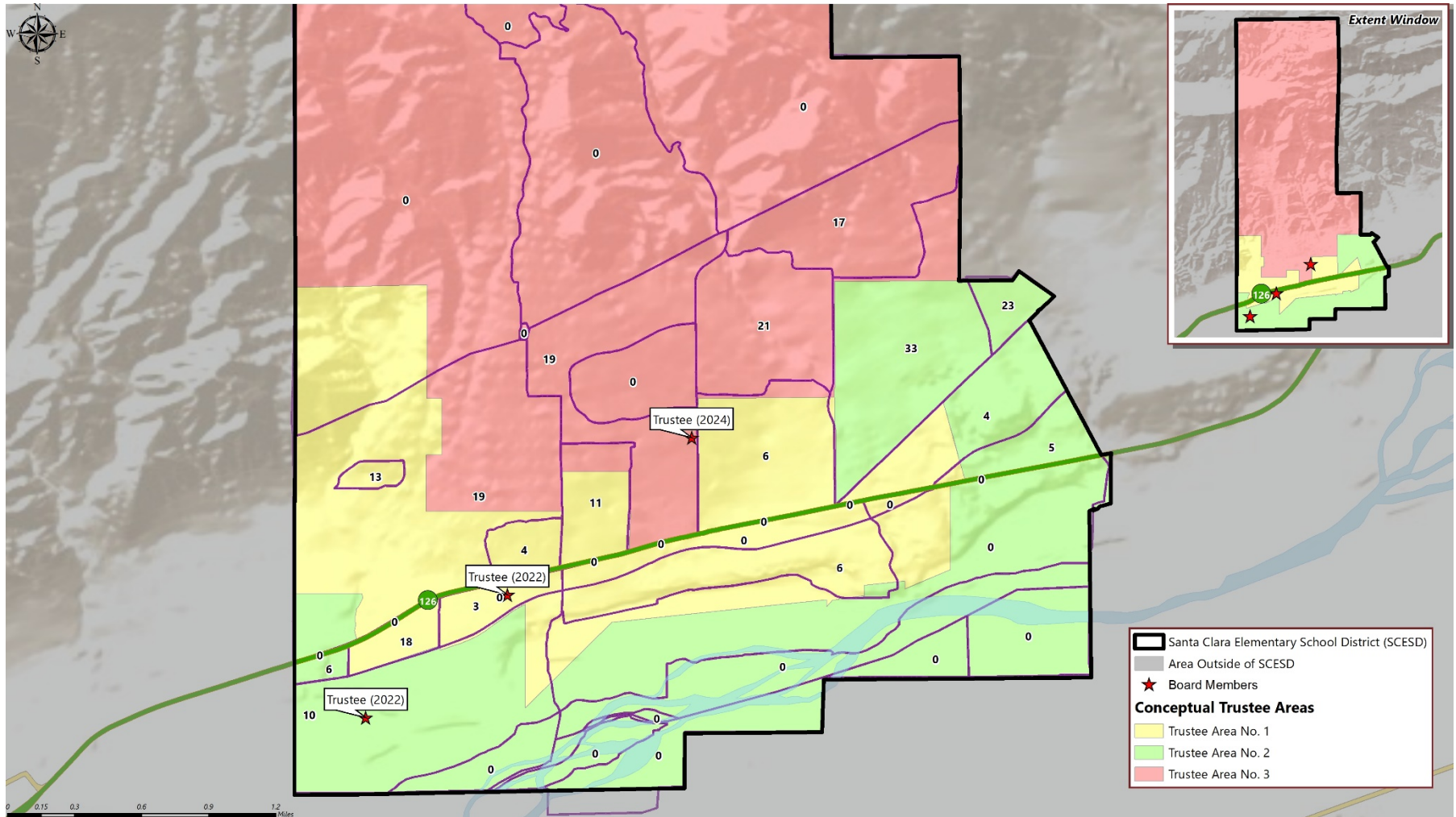
► CONCEPTUAL TRUSTEE AREAS SCENARIO 2



► **DEMOGRAPHICS**
SCENARIO 2

Total Population:	218	Ideal Trustee Area Size:	73	Variance:	2.7%	
TRUSTEE AREA	Trustee Area 1		Trustee Area 2		Trustee Area 3	
TP* vs. CVAP**	TP	CVAP	TP	CVAP	TP	CVAP
Population	74	29	72	62	72	36
Population Variance	1.4%	N/A	-1.4%	N/A	-1.4%	N/A
Hispanic/Latino	63.9%	43.8%	45.2%	28.2%	58.8%	26.6%
White	28.7%	56.2%	51.7%	68.6%	37.8%	73.4%
Black/African American	0.0%	0.0%	0.0%	0.0%	0.0%	0.0%
American Indian/Alaska Native	0.0%	0.0%	0.0%	0.0%	0.0%	0.0%
Asian	0.0%	0.0%	1.4%	3.2%	0.0%	0.0%
Native Hawaiian/Other Pacific Islander	0.0%	0.0%	0.0%	0.0%	0.0%	0.0%
Other	3.3%	N/A	0.3%	N/A	3.4%	N/A
Two or More Races	4.1%	0.0%	1.4%	0.0%	0.0%	0.0%

► CONCEPTUAL TRUSTEE AREAS SCENARIO 3



► **DEMOGRAPHICS**
SCENARIO 3

Total Population:	836	Ideal Trustee Area Size:	279	Variance:	2.7%	
TRUSTEE AREA	Trustee Area 1		Trustee Area 2		Trustee Area 3	
TP* vs. CVAP**	TP	CVAP	TP	CVAP	TP	CVAP
Population	72	59	74	28	72	40
Population Variance	-1.4%	N/A	1.4%	N/A	-1.4%	N/A
Hispanic/Latino	45.6%	27.3%	64.5%	43.4%	57.8%	28.6%
White	51.6%	69.3%	28.1%	56.6%	38.6%	71.4%
Black/African American	0.0%	0.0%	0.0%	0.0%	0.0%	0.0%
American Indian/Alaska Native	0.0%	0.0%	0.0%	0.0%	0.0%	0.0%
Asian	1.4%	3.4%	0.0%	0.0%	0.0%	0.0%
Native Hawaiian/Other Pacific Islander	0.0%	0.0%	0.0%	0.0%	0.0%	0.0%
Other	0.0%	N/A	3.3%	N/A	3.7%	N/A
Two or More Races	1.4%	0.0%	4.1%	0.0%	0.0%	0.0%



QUESTIONS

A row of yellow school buses is parked in a grassy field under a cloudy sky. The buses are yellow with black stripes and have "SCHOOL BUS" written on the front. The background is a dark, cloudy sky, and the foreground is a grassy field with some small yellow flowers.